

# Crosstalk

60p



The Parish Magazine of St Bartholomew with St Chad  
[www.thurstaston.org.uk](http://www.thurstaston.org.uk)

 THE CHURCH  
OF ENGLAND  
Diocese of Chester

February 2019



**"Cross Talk Subscription for 2019 is £6"**

These are now due for 2019. If you see your deliverer please pay them. Alternatively either post a cheque for £6.00 payable to Thurstaston PCC, to St Chad's Church Office, Roslin Road, Irby, CH61 3UH or pay on-line at 40.52.40 00018674, putting your surname and mag subs as reference.

- I enclose £6 and would like to continue to have Cross Talk delivered to my house
- I no longer wish to have Cross Talk delivered to my house

Name: \_\_\_\_\_

Address: \_\_\_\_\_

Tel. No. (optional) \_\_\_\_\_

The views and opinions expressed in the articles in this magazine are those of the author(s) and do not necessarily reflect the views or opinions of the editor, the Rector or the PCC.

**"Your magazine needs you"**

Please send your contributions  
(eg. Poems. Prayers, interesting articles etc.)  
to office@thurstaston.org.uk  
no later than 20th February 2019

## Contents

3	<i>Diary Dates/Registers</i>	15	<i>God in the Arts</i>
4	<i>From your Rector</i>	16	<i>Forum Housing Thankyou /Choir volunteers plea</i>
5	<i>Fruitfulness on the Frontline</i>	17	<i>RDA/Age UK /Wirral / Men's Breakfast</i>
6	<i>Celebrating Church and School Community Links</i>	18	<i>Movie Moments</i>
7	<i>9 Dawpool SAMS report</i>	19	<i>Mouse Makes</i>
10	<i>Women's World day of prayer</i>	20	<i>Ecclesiastical Insurance</i>
11	<i>Electoral Role</i>	21	<i>Easy Fundraising</i>
12	<i>Thankyou/EMU</i>	22/23/24/24/25/26	<i>Advertisers</i>
13	<i>An evening with Rob Parsons</i>	27	<i>Contacts List: Who's Who</i>
14	<i>Psalm 95 wise words on worship</i>	28	<i>February Services</i>

## Diary Dates

**Commencing 31st January**  
Fruitfulness on the Frontline  
See page 5

**Saturday 2nd February**  
Wirral Men's Breakfast  
See page 17

**Sunday 9th—24th February**  
Electoral Roll Form  
See page 11

**Wednesday 20th February**  
EMU  
Peter Fearnhead and George the guide dog

**Friday 1st March**  
Women's World Day of Prayer  
See page 10

**Tuesday 12th March**  
An Evening with Rob Parsons  
See page 13

## *From the Registers*

### *Funerals*

*We commend to God's eternal care*

*11th December*

*Lottie Butler*

*17th December*

*Ruth Dann*

*9th January*

*Albert Pye*

## From Your Rector

Dear Friends

*'Should I stay or should I go?'* (The Clash). Since the Referendum in June 2016, we have seen families, our nation and Parliament divided by different opinions over Europe. But *'at the heart of the Christian message is Jesus' command to love our neighbour. This includes those with whom we agree and disagree: at home, in Europe and further afield.'* (CofE Bishops, December 2018).

As we celebrate St Valentine's Day this month, how can we conduct this debate in a loving way? The Apostle Peter reminds us: *'Show proper respect to everyone, love the family of believers, fear God, honour the emperor.'* (1 Peter 2:17).

*Respect everyone:* However much we may disagree with another people's perspective, we should respect them as people. This applies even if they don't respect our views!

*Love the church:* Among the family of believers there should be an even greater respect for each other! The way we treat each other not only reveals the depth of our love; it will also cause people to glorify God and want to be part of the family.

*Fear God:* We must demonstrate our allegiance to God by putting Him first and following His leading. Of course, this doesn't stop Christians from having different opinions to each other.

*Honour those in authority:* We are called to honour those who are in authority over us *'for the Lord's sake'* (13). Even when we disagree with their decisions and actions, we should keep our respect and not speak ill of them.

Peter is calling us to live with the freedom to make up our own mind on Europe, while listening to what others say (16). *'A Christian is a perfectly free lord of all, subject to none. A Christian is a perfectly dutiful servant of all, subject to all.'* (Martin Luther).

*Rerd Jane*



# FRUITFULNESS ON THE FRONTLINE

When Jesus says “Go into all the world”,  
I wonder ..... What comes to mind?

Maybe some teeming steaming city far away?

Maybe some sun drenched remote tropical island?

Maybe .... But for now ...

What if there’s a mission field right under your nose?

A frontline in a bit of the world you already spend time in:-

- at work or working out in the gym
- At the school-gate or the factory-gate
- At the grocer’s or with the grand-kids
- With friends or the footy
- Down your street or down the pub

What if where you are NOW really matters?

What if you found out who you are makes a massive impact on where you are and “little old you” began to change the culture around you?

What if your words made a real difference and God could be in the smallest things you do?

And what if you discovered how love - love does change everything - and how actually amazingly, God has already been working in and through you and isn’t stopping anytime soon?

**SO COME EXPLORE TOGETHER**  
and see how you can equip and encourage one another  
to grow in fruitfulness on the frontline.

## St Chad’s Extension - Thursday Evenings 8.00-9.30pm

- 31<sup>st</sup> Jan    **Session 1: The Big Picture**  
 7<sup>th</sup> Feb    **Session 2: Modelling Godly Character**  
 14<sup>th</sup> Feb   **Session 3: Making Good Work**  
**HALF TERM**  
 28<sup>th</sup> Feb   **Session 4: Ministering Grace & Love**  
 7<sup>th</sup> Mar    **Session 5: Moulding Culture**  
 14<sup>th</sup> Mar   **Session 6: Mouthpiece for Truth and Justice**  
 21<sup>st</sup> Mar   **Session 7: Messenger of the Gospel**  
 28<sup>th</sup> Mar   **Session 8: The Journey On**

Using some fantastic material written by Mark Green and the London Institute for Contemporary Christianity (LICC), we’ll be thinking about what it means to live as disciples on the ‘frontlines’ of our lives.

We will be given the opportunity to reflect on these issues using a DVD resource and discussion booklet .

Please let Revd Jane know if you would like a copy of the booklet in advance of the first meeting.

## Celebrating Church and School and Community Links

Dawpool Primary school started a lunch time knitting club run by teaching assistant Mrs Lecoustre. The pupils mastered the art of knitting squares and then wanted to do something useful with all of their squares. They decided that they would like to make them into a blanket which could be raffled at the school Christmas Fair and the money donated to charity. Mrs Lecoustre then asked if anyone at church would be able to assist with the task of sewing the squares together. EMU (Evening Mothers Union) immediately saw this as a great opportunity to support the school and encourage the children and used their November meeting to complete the task. Once the ladies had sewn all of the squares together, they realised that the blanket would look much better with a crocheted edge so one of the ladies took the blanket home and made the finishing touches including picking up some dropped stitches in the knitted squares and tidying up some of the loose ends. It was then Revd Jane's great privilege to deliver the completed blanket back to school and to share in the pupils excitement and to see the pride on their faces as they saw the blanket for the first time.

Raffle tickets were sold at both the Church Fair and the School Fair and £61.00 was raised. The pupils chose 5 charities that they thought were worth while and then each of them voted. Steps of Hope - a homeless charity won. A representative of the charity was invited to school in the New year and the cheque presented.



Dawpool had it's SIAMS (Statutory Inspection of Anglican and Methodist Schools) in November and were awarded "EXCELLENT" in all areas. The report is printed on the following pages.

## Statutory Inspection of Anglican and Methodist Schools (SIAMS) Report

<b>Dawpool CE (VA) Primary School</b>			
<b>Address</b>	School Lane, Thurstaston, Wirral CH61 0HH		
<b>Date of inspection</b>	22 <sup>nd</sup> November 2018	<b>Status of school</b>	VA primary
<b>Diocese</b>	Chester	<b>URN</b>	<b>I05078</b>

<b>Overall Judgement</b>	<b>Grade</b>	<b>Excellent</b>
How effective is the school's distinctive Christian vision, established and promoted by leadership at all levels, in enabling pupils and adults to flourish?		
<b>Additional Judgements</b>		
<b>The impact of collective worship</b>	<b>Grade</b>	<b>Excellent</b>
<b>The effectiveness of religious education (RE)</b>	<b>Grade</b>	<b>Excellent</b>

### School context

Dawpool C E (A) Primary School has 235 pupils on roll. The school has a very low level of religious and cultural diversity and very few pupils speak English as an additional language. The proportion of pupils who are considered to be disadvantaged is below national averages. It serves a socially and economically advantaged community, but draws children from a wide range of social backgrounds. The proportion of pupils with special educational needs and disabilities is below national averages. Staffing has been stable since the last inspection, other than the appointment of the headteacher in January 2016.

### The school's Christian vision

The Dawpool community is united in their ambition to create a school which embodies the person, love and work of Jesus Christ: a school which enables Christian values to flourish and where all children experience the abundant life that Jesus offers.

### Key findings

- The clear and uncompromising vision is brought to life in a real and relevant way. It shapes all aspects of school life resulting in innovative practice that transforms lives.
- The commitment to ensure that all pupils make at least expected progress from their starting points and flourish both academically and spiritually.
- The unique curriculum for Christ-likeness, fusing learning powers with the Fruits of the Spirit and Christian values. This is all taught in the context of the person, love and work of Jesus and leads to life-enhancing experiences for the pupils whose spiritual development is remarkable.
- The development of all staff is a high priority, as a result staff are well-trained and supported. This has contributed significantly to the school becoming a centre of excellence with other church schools in the locality.

## Areas for development

- To build on the work being done to deepen the pupils' understanding of their global neighbours, so as to broaden their horizons, and allow them to learn from diverse communities.
- To enable pupils to engage with the Eucharist in creative and innovative ways so they understand that it is an important part of Christian worship.

How effective is the school's distinctive Christian vision, established and promoted by leadership at all levels, in enabling pupils and adults to flourish?

### Inspection findings

The school's distinctively Christian vision is bold in its ambition to create an environment that reflects the person, love and work of Jesus. It is the result of children, staff, governors and parents working together. All have a clear and personal insight into what the abundant life that the school aims to promote, means to them. They all have the same theme in common: the children and how they should be thriving and flourishing. All leaders, including governors, are committed to the school being a centre of excellence where professional development is valued, and is an integral part of school development. Senior leaders have completed the Christian Leadership Programme, and there is a 'Valuing all God's Children' lead teacher. Collaboration with local schools has resulted in innovative practice being disseminated such as the sharing of rigorous assessment procedures for Religious Education. The school is led by an inspirational headteacher who has aspirations to share this practice at a national level. He is ably supported by the deputy headteacher who has led Religious Education, developing good practice that has resulted in exceptionally high attainment. Governors are rigorous when monitoring the school's effectiveness as a church school. They hold the headteacher in the highest regard, acknowledging that he has been instrumental in developing the Christian vision. Pupils are able to articulate how the vision enables them to grow as reflective, spiritual individuals. One gave the example that she tries to think about what Jesus would do in given situations. This is not limited to academic achievement, but extended to their development as whole human beings. Every child is encouraged to find their particular aptitude or talent and fulfil their potential. All staff seek to help them find their purpose and experience an education where nothing holds them back. They are well supported by the local church where relationships between the clergy and the school are exceptionally strong. This link is appreciated by children, their families and members of the congregation alike. Worship for parishioners is enhanced when the pupils are present when leading worship at different times of the year.

Pupils benefit from the close work that both church and school undertake, especially the weekly visit from clergy. The vicar's commitment to the school is considerable and this results in both parents and staff knowing that they are spiritually supported. Pupils in the worship and ethos group are fully involved in the planning and delivery of worship on a weekly basis. A familiar format is used to enable them to do this independently. As a result, they show an understanding of liturgy and follow Anglican practices with confidence. Christian symbols are used and explained and all pupils are invited to respond and they do so with impressive maturity. Worship is inclusive and invitational. The school's journey through the Bible, with their weekly focus on the different books, is inspirational as it provides pupils with the opportunity to develop a wealth of knowledge that exceeds their years. Nothing is forced and there is an understanding that it is acceptable for pupils to choose not to participate, as long as everyone is respectful.

The Christian vision is central to the curriculum that claims to be a curriculum for Christ-likeness. Learning powers, such as resourcefulness, reasoning and resilience are interwoven with the Fruits of the Spirit and Christian values. Together they form the basis for all curricular and extra-curricular provision. This inevitably enables pupils to reflect and explore the spiritual and ethical dimensions of all subjects and



learning experiences. The person, the life and the work of Jesus are used as a foundation and reference point for all policies and practices. The unique academic and spiritual needs of all pupils are met through the fully inclusive curriculum. Recent data shows that all pupils, including those who are both most vulnerable and most able, make at least good progress from their starting points. This is due to outstanding teaching and creatively funded, well resourced, expertly planned interventions. Staff ensure that any barriers to inclusion that might limit the life chances of pupils are significantly reduced. Through inspirational teaching, pupils develop into reflective people who have the confidence to ask high level questions and confidently articulate their reasoning. This includes the consideration of current affairs and issues related to injustice and discrimination as well as challenging prejudicial behaviour within the school community. The pupils' love of learning and appreciation of the close-knit community in which they learn results in attendance that exceeds the national average.

The range of activities and pupil responsibilities available to them helps to develop their aspirations and self-esteem, for example, the development of mindfulness that allow pupils to be aware of themselves and their emotions. They are resilient and comfortable to show their vulnerabilities, asking for help when needed. Parents speak passionately about the Christian vision being lived out in a very personal way. Families are supported where necessary, and every child is valued and celebrated as a child of God. When questioned, all parents spoke respectfully of staff and how they all go above and beyond to ensure all pupils are happy. A desire to help others is developed in the pupils who look for ways to serve and support each other. They have a genuine concern for tackling injustice and plan events to support both national and global charities. One such charity is the Direct Rainwater Intervention Project (DRIP) in Uganda.

Pupils are taught how to live well together. They are confident in the adults' ability to keep them safe and endorse respect and tolerance. The new anti-bullying policy which is fully in line with the school's Christian vision, has been collaboratively developed. It supports pupils' self-esteem and promotes forgiveness and reconciliation. Pupils have a voice and are encouraged to use it. They discuss their wellbeing with maturity and understanding and demonstrate a willingness to 'bend' when necessary, to avoid confrontation. They embrace differences and make allowances for each other and are comfortable as the person God made them to be. The staff feel completely valued and supported by the school leaders who make deliberate efforts to address their work-life balance. As a result they are empowered to carry out their role to a very high level of professionalism. The abundant life promoted by the Christian vision extends to the staff who clearly love their school and are committed to working hard to make it the excellent church school that it is.



**The effectiveness of RE is Excellent**

**ONLY** The use of the Chester diocesan syllabus, enhanced with the 'Understanding Christianity' materials, ensures that all pupils have rich RE learning experiences that develop their knowledge of Christianity and other world faiths. The school leaders ensure that RE provision reflects the Church of England Statement of Entitlement. The RE lead supports teachers to deliver purposeful and engaging lessons that facilitate pupils' theological understanding. They challenge and support pupils' exploration of religious beliefs and practices. Pupils have opportunities to question their own and others' faith and are respectful towards those who have none. Pupils speak enthusiastically about their exciting RE lessons that are evidenced in creative floor books (KS1) and individual books for personal reflection (KS2). Attainment and progress are outstanding across the whole school, exceeding the outcomes in all other core subjects.

Headteacher	David Burrows
Inspector's name and number	Joanne Abram 931



## World Day of Prayer

**A global ecumenical movement led by Christian women who welcome you to join in prayer and action for peace and justice.**

World Day of Prayer is a global ecumenical movement led by Christian women who welcome all to join in prayer and action for peace and justice on every first Friday of March and throughout the year.

Last year it is estimated that 95,829 services were held in 113 languages, including versions in Braille and large print. The worship service's attendance was estimated at around 1,618,869 persons. The celebrations were held in churches, schools, hospitals, prisons, convents, and elderly homes.

In a few countries, the worship service was broadcasted on national TV, radio, and via live stream. WDP activities were announced in the city or church's newspapers, posters, fliers, Facebook, website, and Twitter. Around 24 activities, especially for children and youth, were held in many schools and churches across the seven regions.

The origins of World Day of Prayer date back to the 19th century. In 1897 the women of 6 denominations formed a joint committee for a united day of prayer for home missions. Each year participating denominations would write a common worship service by rotation.

After the devastation of World War the first Friday of Lent was established as a joint day of prayer for missions and was celebrated for the first time on February 20, 1920.

In 1930, Helen Kim of Korea was the first woman outside of the United States to write the order of worship. Today, the annual event, although led by women is supported and attended by men, women and children. Here in the UK we have a national committee which links the regional committees to ensure that the 72+ annual services go smoothly and everyone is invited to join in prayer.

In 2018 the World Council of Churches invited the World Day of Prayer to participate in the Global Consultation commemorating the 20th Anniversary of the Ecumenical Decade of Churches in Solidarity with Women which took place in Kingston, Jamaica from October 2nd to 6th 2018.

The international symbol for World Day of Prayer was developed by the women of Ireland. Its design is made up of arrows converging from the four points of the compass, persons kneeling in prayer, the Celtic cross, and the circle, representing the world and our unity through all our diversity.

Our next annual day of prayer will take place on Friday 1<sup>st</sup> March 2019. Two services in your local area here on Wirral will take place that day. One at 1.45pm at Church of the Good Shepherd, Heswall and one at 7.30pm in Holy Family Church, Pensby. Details can be given by your local church or from Mrs Ann Vassie, tel. 0151-648-4654.

## The Electoral Roll

All Church of England parishes are required to maintain an electoral roll. Those people whose names are on the roll are entitled to attend the Annual Parish Meeting and to vote. They are also eligible for election on to the Parochial Church Council. The number of people on the electoral roll also determines how many representatives can be sent to the Deanery Synod where decisions may be taken that effect the churches within the deanery. It is therefore important that all those eligible should be entered on to electoral roll for this parish of St Bartholomew Thurstaston and St Chad Irby.

**Although the roll may be updated regularly a new roll has to be created every 6 years and 2019 is the year in which this had to be done. This means that the electoral roll starts again from a blank sheet of paper and even if you were on the existing roll, you will not be on the new one unless you fill in an application form. You must do this between Sunday 9th and Sunday 24th February, otherwise you will have to wait until after the Annual Meeting on Sunday 7th April.**

To be eligible applicants must be baptised, over 16 and

*Either* Live within the parish boundary

*Or* Have been a regular worshipper at St Bartholomew Thurstaston or St Chad Irby for at least 6 months.

Application forms available at the back of both churches or from the parish office.

## Electoral Roll



**Belong**



**Participate**



**Contribute**

Dear Friends,

Sincere thanks for your kind words, celebrating 25 years' service as Organist at St Chad's and St Bart's. It has been a privilege and a joy, though the years have passed by far too quickly! Many dear friends have supported me during this time to enhance worship and I would like to thank them all, particularly Mike, Chris and Sam who are so generous with their time and commitment.

As Jane discovered, I have long hoped to create a rose arbour in the garden and your very generous gift will enable me to do just that. I am planning it as we speak and will share a photo or two, in time, when the roses are established and in full bloom!

With love and thanks,

Craig



**Mothers' UNION**  
Christian care for families



**EMU** (Evening Mothers' Union) meets:-

One Wednesday in each month, 8.00pm at St Chad's  
for more information contact Chris Rostock (648 1112)

**Next event:** Wednesday 20th February 8pm at St Chad's

We will be joined by Peter Fearnhead and George the Labrador who will be showing us how he has progressed with his Guide Dog training.

**All Welcome**

Dear All

I have just booked a ticket for this event in Liverpool at the Adelphi Hotel, L3 5UL, on the evening Tuesday 12th March. Rob Parsons is an excellent speaker and I would thoroughly recommend this evening to you. More details are below or on the website

<https://www.careforthefamily.org.uk/events/other-events/the-wisdom-house>

If you decide to book a ticket, please let me know and we can then maybe arrange to travel together (bus/train?)

God Bless

Revd Jane

**2019 TOUR**

the  
*wisdom*  
house

*Because you don't always have to learn the hard way*

*An evening with bestselling author Rob Parsons, OBE*

<b>LIVERPOOL</b> Tuesday 12 March	<b>STOKE-ON-TRENT</b> Tuesday 26 March	<b>IPSWICH</b> Tuesday 14 May
<b>SHEFFIELD</b> Wednesday 13 March	<b>NOTTINGHAM</b> Wednesday 27 March	<b>READING</b> Wednesday 15 May
<b>BRADFORD</b> Thursday 14 March	<b>COVENTRY</b> Thursday 28 March	<b>YEOVIL</b> Thursday 16 May

All events 7.30 pm

**To book: [cff.org.uk/wisdom](http://cff.org.uk/wisdom) 029 2081 0800**

WHB-46PST

Care for the Family – a Christian response to a world of need. A registered charity (England and Wales: 1066905; Scotland: SCD38497). A company limited by guarantee no. 3482910. Registered in England and Wales. Registered office: Tovey House, Cleppa Park, Newport, NP10 8BA.

## Psalm 95's wise words on worship

*'Man's chief end is to glorify God and to enjoy him forever'* (Westminster Confession). We are created to worship, but who or what will we worship? Psalm 95 invites us to worship God and to engage with His presence and power.

***Rejoicing in God (1-5):*** *'Come, let us sing for joy to the Lord.'* (v5). In worship we are called to praise God through *'singing, shouting and extolling'*, because He is our king (7), creator (8) and rock (1). He truly has the whole world in His hands, including you and me! Whatever our circumstances, worship enables us to acknowledge his sovereignty over our lives.

***Reverence before God (6,7):*** *'Come, let us bow down in worship, let us kneel before the Lord our Maker.'* (v<sup>0</sup>). Worship brings us into the place of submission before God. The NT word for worship means *'to prostrate'* ourselves before Him. It challenges the counterfeit 'gods' in our lives eg. power, money, sex, work etc., as well as calling us to trust Him in whatever we are facing, as He is a loving shepherd who cares for us.

***Responding to God (8-11):*** *'Today, if only you would hear His voice, do not harden your hearts as you did...in the wilderness,'* (v<sup>2, 3</sup>). Our worship enables us to listen and hear God's voice. He has a fresh word to speak into our lives on a daily basis. Unlike the people of Israel in the wilderness, we are warned not to harden our hearts, but to embrace God's new life. The test of genuine worship is not whether it feels good or fits our taste, but does it lead to greater obedience in our lives.

Johann Sebastian Bach headed all his compositions with S.D.G. ie *'Soli Dei Gratia'*, which means *'To God alone be the glory'*.

## ‘The Presentation in the Temple’ by Guercino

This month of February opens with the celebration of Candlemas. On the 2<sup>nd</sup> we recall that special moment of enlightenment when Mary and Joseph bring Jesus to the temple. They meet Simeon, who represents the waiting people of Israel – a nation looking for a better world now that the holy city was in the hands of Roman invaders.



Simeon clung to the hope that God would come to bring freedom and a new life. When it came, there was no fanfare, no warning. St Luke in his Gospel tells us of an ordinary family from far-away Nazareth who go to Jerusalem to perform the religious duties for the firstborn son. But in their encounter with Simeon we see and hear something extraordinary.

The scene is captured in this beautiful painting of 1623 that hangs in the National Gallery: ‘The Presentation in the Temple’ by Guercino. The artist Giovanni Barbieri had the curious nickname Guercino which means ‘Squinty.’ Why squinty, we are not sure, for all is clear and lyrical in this work.

At the base of the canvas we see the turtle doves with two ducks, but the heart of the scene focuses on Mary, Joseph and Simeon linked by the Christ-Child. Notice the gentle hands of Mary, the strong, supportive hands of Joseph, and the outstretched, waiting hands of Simeon. He may be an old man, but he is ready to welcome the babe, who is offered as a sign of hope and light for the future. A candle burns at the right side to emphasise the light shed by this meeting of infancy and old age.

St Luke by tradition was an artist himself, depicting the stories of his gospel with the deft strokes of a painter. In this scene the words of the evangelist and the skill of a 17<sup>th</sup> century Italian artist tell us that, at whatever age we are, we can also find light and hope as we offer our hands and our hearts to welcome the Christ-Child.

11 January 2019

Mrs Christ Rostock  
St Chad's Church Irby  
Thurstaston Rectory  
Roslin Road  
Irby CH61 3UH



**FORUM HOUSING**  
**it's all about you**

18 Hamilton Square  
Birkenhead  
Wirral  
CH41 6AX

Telephone: 0151 649 9718  
Email: [info@forumhousing.co.uk](mailto:info@forumhousing.co.uk)  
[www.forumhousing.co.uk](http://www.forumhousing.co.uk)

Dear Chris and the Congre

On behalf of Forum Housing Association and our young people, I would like to thank you for the kind donations that were so gratefully received towards our Christmas Appeal 2018.

This year, thanks to your gifts, the team here at Forum were able to make up Christmas bags that were distributed out to over 300 young people who live with us.

As you can imagine the Christmas period can be a particularly lonely and isolated time for some of our residents, with many of them spending it alone. As well as extra engagement activities taking place around our projects, your gift helped make Christmas special.

We are also pleased to share with that we had enough donations left over to provide toiletries for any new move-ins we have at the beginning of the New Year, in the majority of cases young people arrive with nothing. You have made it possible for them to have access to the necessary items to make them feel clean and welcome until they can financially afford to get up on their feet again.

Once again thank you for your generosity, kindness and support.

Kind regards

**Debbie**

Debbie Thompson (Mrs)  
CHIEF EXECUTIVE



### ONE OFF CHURCH CHOIR...volunteers please

I have been approached by a wedding couple who would like a choir at their wedding Friday 10 May.

It would be to sing 3 hymns with the congregation.. The hymns are "Jerusalem", "All things bright & beautiful" and "Love Divine".

Craig has kindly agreed to rehearse with us, so if you would like to do it, please let me know and then I can arrange for us to get together and try it out. I see it as a one off, no commitment to anything in the future.

The couple will be making a donation for our services, so good for church funds but I think it would be a nice thing to do and singing is good for soul, so will be enjoyable too.

Thanks, Julie DeBoorder  
Home 0151 648 6331/Mobile 07599 186893  
Email [jules2121jule@gmail.com](mailto:jules2121jule@gmail.com)

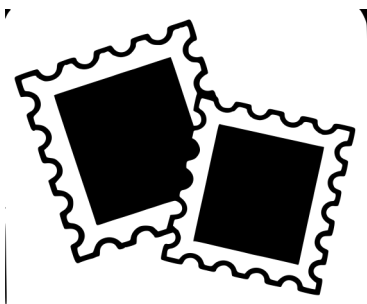






**Please collect your Postage Stamps** throughout the year for RDA (Riding for the Disabled).

There is a box in St Chad's foyer and an envelope at the back of St Bart's.




Wirral age UK are launching a new initiative called Joining Forces. This is a veterans project aimed at older veterans aged 65 plus. They will be based in Meadowcroft in Bromborough and are able to offer help and support in a number of areas including, Information and Advice, Health and Wellbeing and Reminiscence work also.

Leaflets are available at both churches.

**MEN'S BREAKFAST**

AT  
**THORNTON HALL HOTEL**


8AM START • 10AM FINISH



**ONLY £11.50 PER TICKET**

**SATURDAY 2ND FEB**


**PADRE ANDY EARL**



What do you do when the bullets are flying around you and you haven't a weapon to return fire ?

Described by the Daily Mail on his appointment as "The British Army's new secret weapon," Padre Andy Earle will be speaking about life on the frontline in Afghanistan. After a full career as a senior police officer, Andy joined the British Army not only "to see the world" but also to stand alongside Airborne Engineers, Bomb Disposal, Irish Infantry and Special Forces.

This is a breakfast not to be missed for blokes with attitude.



**BOOK ONLINE:**

[www.wirralbreakfast.co.uk](http://www.wirralbreakfast.co.uk)

NESTON ROAD, THORNTON HOUGH, WIRRAL CH63 1JF  
FOR FURTHER INFORMATION AND TELEPHONE BOOKINGS,  
CALL: 0151 347 5658



## MOVIE MOMENTS

Nick and Carol Pollard from EthosMedia.org share thought-provoking reflections on the latest films.

# Rediscovering joy and wonder

Children have a natural sense of joy and wonder. But, as Mary's magical umbrella says in *Mary Poppins Returns*, 'grownups forget, they always do.' Why is this? And how can that joy and wonder be rediscovered?

In this long-awaited sequel, Michael Banks, the young son in the first film, is now grown up with children of his own. Tragically his wife has died, and his life is falling to pieces. 'The magic vanished since you went away' he sings to her memory. He has abandoned his hope of becoming an artist and taken a mundane job at the bank.



When his youngest son brings Mary Poppins home, saying 'I was flying a kite and caught a nanny', Michael's immediate thought is that he cannot afford her. But Mary is undeterred, she is on a mission once more to save the Banks family.

At first the children are sceptical but, when she takes them on a fantastical underwater adventure through the bubbles of their bath, they realise that Mary is no ordinary nanny. And this is no ordinary sequel. *Mary Poppins Returns* takes these adventures deeper than the first film. They don't just provide a spectacular visual and musical treat, they also provide opportunities for the children, and us as the audience, to reflect on important life lessons. In her upside-down repair shop, Mary's cousin Topsy invites them to look at life from a different perspective. In the magical music hall Mary sings 'the cover is nice but it's not the book... so open it up and take a look.'



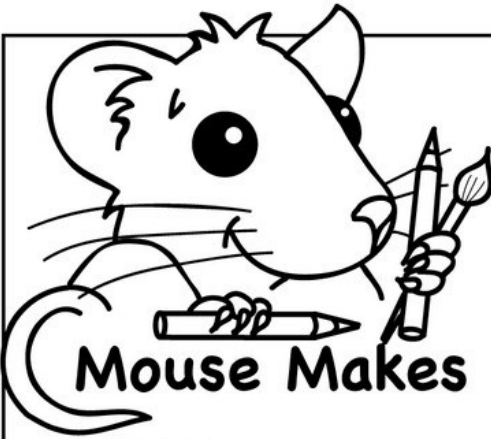
In the spectacular dance routine by lamplighters, Mary's friend Jack teaches them to look up for a light to guide them home.

This beautiful sequel will undoubtedly reawaken the joy and wonder many of us experienced in the first film. But, perhaps its extra depth and meaning might also reawaken our joy and wonder in life. If we, like Michael, have become worn down by the cares and worries of this world, perhaps we also need to rediscover what it means to look through the eyes of a child.



**ETHOS  
MEDIA**.org

EthosMedia.org provides free resources to help people explore spiritual, moral, social and cultural issues through the latest feature films.



**Mouse Makes**

**WHAT IS LOVE?**

Cross out every other letter to find the Bible verse, then look it up.

OHNKEWJLOSHCNP  
CGHUADPBTFEKRA  
FJOMUORD  
VWEURDSKEV  
TOEGNP

**God's love is...**

Change each letter to the letter before it in the alphabet.

"Hpe mpwfe uif xpsme tp nvdi  
uibu if hbwf ijt pomz tpo tp  
uibu fwfszpf xip cfmjfwft  
jo ijn nbz opu ejf cvu  
ibwf fufsobm mjgf."

Kpio 3:16



**How does God show he loves us?**

Look at this in a mirror!

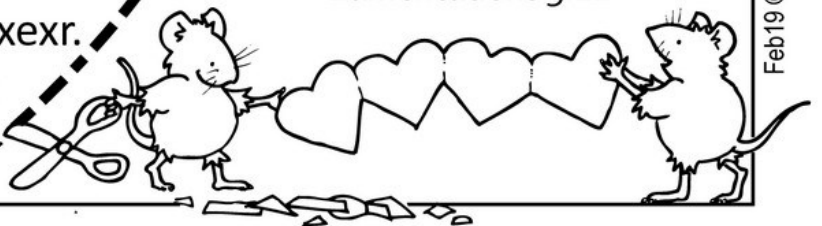
su rot evol aiH beworls boG  
otni no2 ylno air gnibnez yd  
the world, so that we  
might have life  
through Him  
1 John 4:9

**HOW LONG IS GOD'S LOVE?**

Cross out all the xxx to find out!

xxGxixvxexxtxhxaxnxxkxsxxtxoxtxhx  
exxLxoxrxdx,xfxoxrxxHxexxiixsxsxg  
xoxxoxdx,xxHxixsxsxxtxeaxxdx  
fxaxsxtxxlxoxvxeexnxdu  
rxxexsxfxoxrxxexvxxexr.  
xpxsxaxxlxxmxx  
1x3x6:1

"The steadfast **love** of  
the Lord *never* ceases"  
*Lamentations 3:22*





Choose the UK's most  
trusted home insurer  
and we'll donate

**£130**

to your church



To celebrate our 130<sup>th</sup> anniversary, Ecclesiastical is offering to donate £130 to your church for every new home insurance policy taken out.

We're proud that customers across the UK have voted Ecclesiastical as the UK's Most Trusted Home Insurance provider, ahead of all other insurers. To celebrate this achievement, and in recognition of our 130 year anniversary, we'll donate £130 to your church if you take out a new home insurance policy with us. To take advantage of this offer visit [www.ecclesiastical.com/Trust130](http://www.ecclesiastical.com/Trust130) or call **0800 783 0130** and quote **TRUST130**.

When it feels **irreplaceable**, trust



Terms and conditions 1. To celebrate our 130 year anniversary we are offering to make a charitable donation of £130 when a new Ecclesiastical Insurance plc Home Insurance policy (a "Policy") is purchased directly from us and your insurance cover commences on or before 31st December 2019, on the following terms and conditions. 2. One charitable donation will be made per Policy issued. 3. Quotation requests for a Policy must be made online or by telephone, quoting TRUST130. This charitable donation offer cannot be redeemed in any other way. 4. Underwriting terms and conditions apply and we reserve the right to not provide a quotation or offer to insure if the property that is the subject of the quotation does not meet our underwriting criteria. 5. The charitable donation is conditional on the named insured under the Policy notifying us of a church in the United Kingdom which is part of the Anglican Communion to receive the donation (the "Nominated Church"). Donations will be made by us directly to the Nominated Church, within 30 days of the Policy start date. 6. "We" and "us" in these terms and conditions refer to Ecclesiastical Insurance Office plc.

CONTAINS PROMOTIONAL MATERIAL

# Help St Bartholomew Thurstaston and St Chad Irby raise FREE funds when you shop online!



Every time you shop, you'll raise a donation for us and **it won't cost you a penny extra!**

## 1. Sign up to easyfundraising

Got to

[www.easyfundraising.org.uk/stbartholomewthurstastonandstchadirby](http://www.easyfundraising.org.uk/stbartholomewthurstastonandstchadirby)

and follow the simple steps to sign up.

## 2. Hit the shops

When you shop online, visit easyfundraising first, click through to the retailer and shop as normal. Everything costs exactly the same

## 3. Earn donations

With every purchase you make you'll raise a donation from the retailer. Your donations are then transferred to **St Bartholomew Thurstaston and St Chad Irby**

**OVER 2,700  
RETAILERS TO  
CHOOSE FROM...**

**TESCO**



**Argos**

**amazon.co.uk**

**John Lewis**  
johnlewis.com

**YOUR M&S**

**Viking**

**ASDA**

**Expedia.co.uk**

**easyfundraising**  
.org.uk



**Visit:** [easyfundraising.org.uk/stbartholomewthurstastonandstchadirby](http://easyfundraising.org.uk/stbartholomewthurstastonandstchadirby)



# J.F. O'REGAN

CHARACTER ROOFING SPECIALIST

**t. 07784 007 767**

**w. [www.jforeganroofing.co.uk](http://www.jforeganroofing.co.uk)**

**e. [jerrysgarnfishing@hotmail.com](mailto:jerrysgarnfishing@hotmail.com)**



## Welcome To J.F. O'Regan Roofing

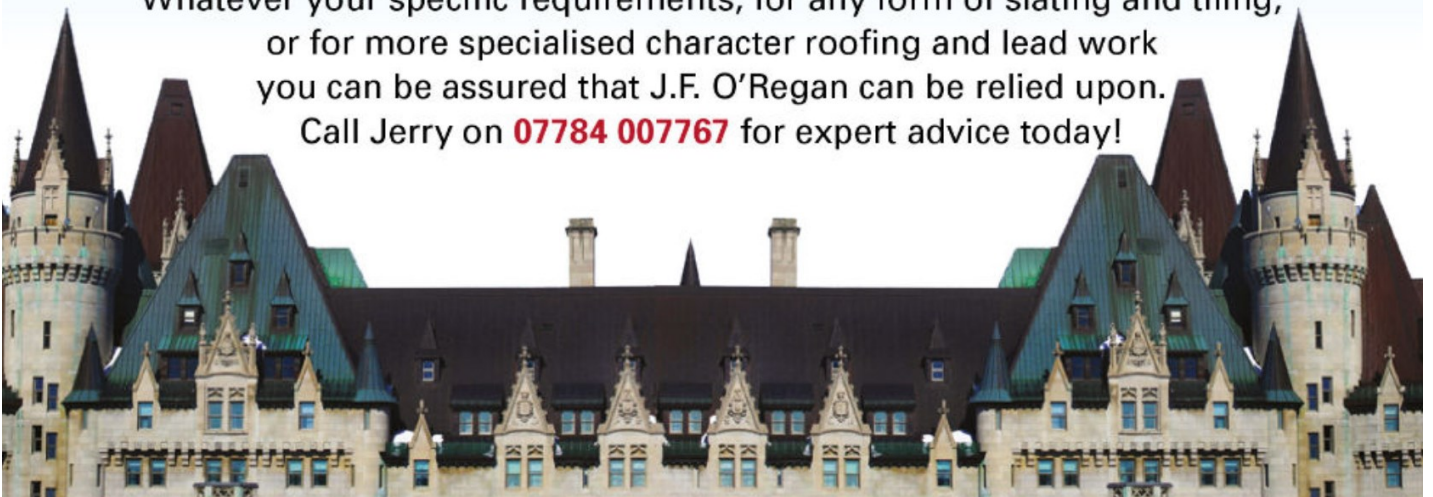
Roof installation, refurbishment and repair - character and period building roofing specialist.

- Listed Buildings
- Schools
- Tonne
- Period Properties
- Churches
- Welsh Slates
- National Trust
- Decorative Slating
- Lead Work
- English Heritage
- Westmorland Green
- Roof Tiles



Whatever your specific requirements, for any form of slating and tiling, or for more specialised character roofing and lead work you can be assured that J.F. O'Regan can be relied upon.

Call Jerry on **07784 007767** for expert advice today!



WELSH | TONNE | RANDOM | SLATE SPECIALISTS



## Enjoy quality live-in care with Promedica 24 West Wirral

*Our expert care workers live in your home with you as a companion and friend so you have the care and support you need, when you need it.*

If living at home is becoming a struggle, Promedica24's live-in care service means you can remain in the home you love, with care at hand every minute of the day.

We match our carers to you based on your specific care needs, your personality, lifestyle and preferences. This helps to ensure that genuine friendships blossom from the day our service commences.

Live in care is a genuine and affordable alternative to a residential care home.

We are experienced in caring for couples and also in supporting those with dementia, Parkinson's, Stroke and other conditions and our dedicated one-to-one support includes assistance with:

- ♥ Morning routines
- ♥ Cooking healthy meals together
- ♥ Keeping on top of housework
- ♥ Sharing interests and hobbies together
- ♥ Visits to friends and family
- ♥ Scheduling and attending appointments
- ♥ Enjoying shopping trips together
- ♥ Getting up and going to bed at a time that suits you
- ♥ Waking in the night

*80% of Doctors surveyed would recommend being cared for in your home\**

*\*The National Institutes of Health*



Good

**Our live-in companionship and care packages start from £695 p/w**



**To find out more about our tailored care packages please get in touch with Jonathan on 07595 967 281 or [J.Hayley@promedica24.co.uk](mailto:J.Hayley@promedica24.co.uk)**



*A family concern  
with concern for  
the family*

An independent family business

Established since 1896

Six funeral homes across Wirral

Fully qualified staff

24 hours a day, seven days a week

Pre-paid funeral plans available

**0151 645 4396**

**reception@charles-stephens.com**

**www.charles-stephens.com**





# HESWALL HALL

**It's all here for you**

Right in the centre of the town, Heswall Hall occupies a prime location. We are a flexible multi-purpose venue for all occasions. We offer:

- Rooms of different sizes to suit your occasion
- Modern, fully licenced bar with local pub prices
- Fully equipped five star rated kitchen
- Excellent parking facilities and public transport links

Our friendly, professional staff will help make your event every bit as special as you'd expect

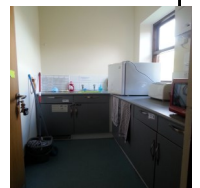
For further information please call Trudi on 0151 342 2614

Heswall Hall, 111 Telegraph Road, Heswall, CH60 0AF Tel: 0151 342 2614, Email: [trudi@heswallhall.co.uk](mailto:trudi@heswallhall.co.uk)  
Web: [www.heswallhall.co.uk](http://www.heswallhall.co.uk)  
Visit us on facebook and twitter

Registered Charity No. 1140612



## Need a Meeting Room?



At St Chad's we have a large hall and several options of different sized rooms.

Bookings can be made by phoning the Hall Booking Secretary  
Mrs Jean Heath: 648 6015

For more information and prices please go to the website  
<https://www.thurstaston.org.uk/hall-and-room-hire/>

## FIRST CLASS FEET



**Emma Cottrell**  
BSc (Hons), SRCh, MChS  
**STATE REGISTERED**  
**CHIROPODIST/PODIATRIST**

Home Visiting Practice

**Telephone**  
**07899952687**

## QUINNS FUNERAL SERVICE

### An independent Family Business

Pre-paid funeral plans  
Private Chapels of rest  
Our experience enables us to offer compassionate expert advice.

Greasby Office, Tel: 0151 677 2299  
West Kirby Office, Tel: 0151 625 5274  
Hoylake Office, Tel: 0151 632 2205

## IRBY MOTOR COMPANY

CARS BOUGHT AND SOLD  
SERVICE & REPAIR - FREE LOAN CAR

**SERVICE: 0151 648 0200**

**SALES: 0151 648 5488**

## ACCOUNTS UN LIMITED

**PATRICIA BRADY ACMA**

**PERSONAL TAX RETURNS .**  
**COMPANY ACCOUNTS . VAT RETURNS**

**HOME VISITS . FRIENDLY &**  
**CONFIDENTIAL SERVICE**  
**648 4379 OR 07968 908779**

## BIRKENHEAD MONUMENTAL LTD

QUALITY MEMORIALS, RENOVATIONS,  
ADDITIONAL INSCRIPTIONS ETC.

CALL FOR FULL COLOUR BROCHURE,  
PERSONAL ATTENTION OFFERED.

**Telephone: 0151 608 2578**

**HelpLink** are a small Wirral charity who support people who are finding life a little difficult. We offer transport, shopping and friendship services via our network of wonderful volunteers.

If you could spare half a day a week or more to help make a real difference please call us on 648 3322 or email [suedavis@helplink.org.uk](mailto:suedavis@helplink.org.uk)  
[www.helplink.org.uk](http://www.helplink.org.uk)



If you would like to purchase advertising space in this magazine please telephone

St Chad's Church Office on 0151 648 8169 or  
**E-mail: [office@thurstaston.org.uk](mailto:office@thurstaston.org.uk)**

Advertising space is sold in good faith.  
The Parochial Church Council and/or Editor can take no responsibility for the quality of goods or services offered.

## Contacts

### Churchwarden

Mrs Liz Whitehead

**606 9083**

### Reader

Mr Alan Jones

**648 1400**

### Retired Clergy

Revd David Trollope

**342 2648**

Revd Ray Dent

**792 2022**

Revd Margaret Fletcher

**648 1025**

### PCC Secretary

Mr Graham Barley

**648 1867**

### PCC Treasurer

Mr Kevin Marley

[pcc-treasurer@thurstaston.org.uk](mailto:pcc-treasurer@thurstaston.org.uk)

### Verger

Mr Jon Oliver

**648 1754**

### Organist

Mr Craig Vickers

**648 7405**

### Electoral Roll

c/o Church Office

**648 8169**

### St Chad's Hall Booking Secretary

Mrs Jean Heath

**648 6015**

### Evening Mothers' Union (EMU)

Mrs Chris Rostock (Secretary)

**6481112**

### Flower Guild (St Bartholomew's)

Mrs Elaine Jones

**648 1400**

### Flower Guild (St Chad's)

Mrs Dawn Rudd

**648 0209**

### Cleaning Guild (St Bartholomew's)

Mrs June Bibby

**678 8124**

### Cleaning Guild (St Chad's)

Mrs Leslie Worrall

**648 5590**

### Bellringers Tower Captain

Dr Peter Robson

**648 6691**

## CHILDREN AND YOUNG PEOPLE

### Junior Church

Mrs Julie Deboorder

**648 6331**

### Seniors/Youth (11-16)

Mrs Janet Trigg

**648 8821**

### Rainbows/Brownies/Guides

[www.girlguiding.org.uk](http://www.girlguiding.org.uk) or

Freephone

**0800 1 69 59 01**

## CHARITY REPRESENTATIVES

### Christian Aid Representative

Vacant

### Children's Society Representative

Mrs Jean Heath

**648 6015**

### Leprosy Mission Representative

Mrs Pat Hulme

**538 1953**

### Adoption Society Representative

Mrs Chris Rostock

**648 1112**

## Church Services February 2019

### Sunday Services

#### St Bartholomew's

8.00am Holy Communion (BCP)  
11.15am Holy Communion

**3rd February**  
5th Sunday  
before lent

8.00am Holy Communion (BCP)  
11.15 am Morning Worship

**10th February**  
4th Sunday  
before lent

8.00am Holy Communion (BCP)  
11.15am Holy Communion

**17th February**  
3rd Sunday  
before lent

8.00am Holy Communion (BCP)  
11.15 am Holy Communion

**24th February**  
2nd Sunday  
before lent

#### St Chad's

9.30am Family Service

9.30am Holy Communion

9.30am Morning Worship

9.30am Holy Communion

### Weekday Services

Holy Communion celebrated at St Chad's each Wed 10.15am  
ALL WELCOME

### Baptisms and Weddings

To arrange a baptism or wedding,  
please telephone the Rector, Revd Jane Turner on 0151 648 1816  
or the Church office on 0151 648 8169.

**PLEASE NOTE: Rector's day off - Tuesday**

### RECTOR: Revd Jane Turner

The Rectory, 77 Thingwall Road, Irby, Wirral, CH61 3UB  
Telephone: 0151 648 1816 (Day off Tuesday) E-mail: [rector@thurstaston.org.uk](mailto:rector@thurstaston.org.uk)

### CHURCH OFFICE: Mrs K Butler St Chad's Church, Roslin Road, Irby, CH61 3UH

Telephone: 0151 648 8169. E-mail: [office@thurstaston.org.uk](mailto:office@thurstaston.org.uk)  
OPEN TUESDAY, WEDNESDAY & THURSDAY 9.30am - 12.30pm (term time)

**PARISH WEBSITE:** [www.thurstaston.org.uk](http://www.thurstaston.org.uk)